



General Description

Datalogic Skorpio™ is a rugged mobile computer particularly suitable for mobile commerce solutions in the retail environment, both on store shelves and in the stock room.

Thanks to one of the best ergonomics ever seen on the market, Datalogic Skorpio™ reduces operator fatigue with no compromise in terms of reliability and robustness, resisting harsh environments, multiple drops, strong shocks and repetitive tumbles. Datalogic Skorpio™ offers the unique feature of integrated data capture technology combined with "green spot" feedback (Datalogic patent), providing a "good read" green dot directly on the code, where the operator usually tends to be looking.

Datalogic Skorpio™ system architecture is based on the fastest Intel X-Scale series processors coupled with the latest release of the Windows CE operating system.

It is ready to grant full shift coverage in terms of autonomy exploiting its long lasting Li-ION batteries as well as to satisfy the most demanding customer needs (i.e. expandable memory thanks to the Mini Secure Digital standard slot). Its wireless communication capabilities (Bluetooth®, Wi-Fi® certified 802.11b/g) enable fast transactions and complete interaction with information systems including the newest RF security protocols such as WPA™ and WPA2™. Moreover, Cisco Compatible Extensions (CCX) certification Version 3 permits all the advantages offered by the Cisco WLAN infrastructure to be exploited.

Furthermore, Datalogic Skorpio™ large high visibility color graphic display with touch screen helps users work more efficiently, while the practical 38-key "alpha & numeric" keypad allows data, codes and descriptions to be input very quickly.

Datalogic Skorpio™ is able to fulfill 100% of traditional text-based applications (i.e. terminal emulation, through the DL-TCL-NET™ software client) as well as the most modern Web-based solutions (i.e. exploiting Microsoft Internet Explorer through the DL Locked-Web-Browser application).

Developers can create and deploy single or multiple data collection applications rapidly exploiting the MCL Collection, while IT managers can centralize the management of mobile devices revising configurations, synchronizing software and updating firmware and drivers remotely and seamlessly thanks to the Wavelink Avalanche software.

Datalogic Skorpio™ offers retailers the best mobile commerce solution to gain the greatest benefit in the least time for those "selling and serving on the move"!

Features

- > Compact, lightweight and robust
- > 1.5 m drop resistance; IP64 protection class
- > Microsoft Windows CE 5.0 operating system
- > Datalogic "Green spot" (patented)
- > Bluetooth® and Wi-Fi® communication options (CCX V3)
- > Large high visibility color graphic display with touch screen

Applications

- > Warehouse management: inventory/picking/shipping/receiving
- > Shelf replenishment
- > Price management
- > Ordering
- > Assisted sales
- > Line busting

Specifications

PHYSICAL CHARACTERISTICS

DIMENSIONS	196 x 77 x 33 mm / 7.7 x 3.0 x 1.3 in. (min.)
WEIGHT	310 - 360 g / 10.9 - 12.7 oz (incl. battery)
DISPLAY	Reflective TFT daylight readable color display, 240 x 320 pixels, 2.8 in. (71 mm) diagonal, 65 K colors, backlight, touch screen
KEYBOARD	38 rubber keys
OPERATING TEMPERATURE	-10 °C (14 °F) to +50 °C (122 °F)
STORAGE TEMPERATURE	-20 °C (-4 °F) to +70 °C (158 °F)
DROP RESISTANCE	Withstands drops from 1.5 meters (5 ft) onto concrete
ENVIRONMENTAL SEALING	IP64 standard for water and dust resistance

PERFORMANCE

OPERATING SYSTEM	Windows CE 5.0 Core/Professional
MICROPROCESSOR	Intel® XScale PXA270 @ 312/520 MHz
SYSTEM RAM MEMORY	64 MB/128 MB
SYSTEM FLASH MEMORY	64 MB/128 MB (including Backup directory for user data & programs permanent storage)
EXPANSION SLOTS	Mini Secure Digital and Compact Flash slots

SERIAL COMMUNICATION

INTERFACES	Electrical: 3-pin RS232 up to 115.2 Kbps via Transceiver/Charger USB: high speed USB (USB 1.1) via Transceiver/Charger or through Mini USB connector
------------	---

WIRELESS COMMUNICATION

LOCAL AREA NETWORK	IEEE 802.11b/g (Wi-Fi®); CCX V3 Antenna: Internal Frequency range: Country dependent, typically 2.4 - 2.5 GHz
PERSONAL AREA NETWORK	Bluetooth® IEEE 802.15 Antenna: Internal

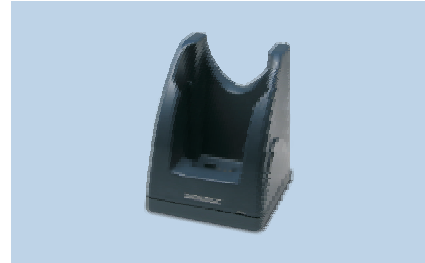
POWER MANAGEMENT

POWER SUPPLY	Removable battery pack with rechargeable Li-Ion batteries; 3.7 V 2,100 mAh (7.8 Watt-hours); Local connection for fast battery charging
--------------	---

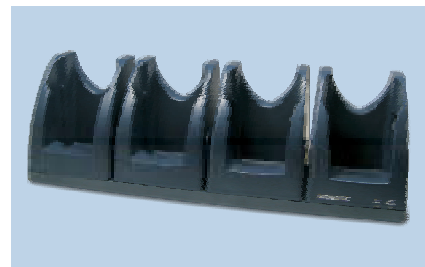
LASER CHARACTERISTICS

SCANNING RATE	104 ± 12 scan/sec
MINIMUM RESOLUTION	0.10 mm / 4 mils
DEPTH OF FIELD	5 to 90 cm (2 to 35 in), depending on bar code density
BAR CODES	EAN/UPC, Code 39, 2/5 Codes, Plessey, Codabar, Code 128, EAN128, MSI, Code 93, Code 11
LASER CLASSIFICATION	VLD - Class II EN 60825-1/CDHR

Accessories



Single Cradle (USB or RS232 or RS232+Modem)



Multiple Cradle (RS232 or Ethernet)



Multiple Battery Charger



Functional Case

